



Ronald
McDonald
House®
PERTH

ANNUAL REPORT 2013



Ronald McDonald House Perth
Annual Report 2013

CONTENTS

A Message from our Patron	3
A Message from the Executive Officer	4
A Message from the Chairman	7
Ronald McDonald House	8
Reconciliation Action Plan	9
Stronger Together Capital Campaign	10
2013 Highlights	12
Programs Overview	18
Fundraising Highlights	23
Because of You	25
A Message from the Treasurer	26
Financial Statements	27



PATRON'S MESSAGE



It is an honour to be the Patron of Ronald McDonald House Perth. For the past 14 years, I've had the privilege of meeting the families who have called this House a home during one of the most difficult times in their life. Coping with the diagnosis of a seriously ill child is incredibly challenging and frightening, not to mention having to relocate from their regional homes and communities to Perth.

The security and safety that the House provides would not be possible without the generosity of the many Western Australian's who provide their support on so many levels. Whether volunteering their time, donating goods and services or providing much needed funding, each element goes towards maintaining this essential service for the regional families of seriously ill children. To all of you I say - thank you.

October 2012 saw the start of the Stronger Together Capital Campaign to build a new Ronald McDonald House for Western Australia of which I was incredibly proud to be the co-patron with the ex-

governor of Western Australia Dr Ken Michael AC. Together with our Capital Campaign Chairman Peter Meurs, Director of Development of Fortescue Metals Group and Chairman of our Leadership Taskforce, Dalton Gooding of Gooding Partners we worked to garner support for this incredible project. Their passion and vigour has been extraordinary. With the support of the Western Australian community, \$22 million was raised in 9 months which is a testament to the support behind this incredible charity.

I could not be more proud than I am right now of this amazing Charity and I would like to acknowledge and thank the Board of Management and the Staff and Volunteers of the House, in particular our inspirational Executive Officer Alison Salmond. Their untiring efforts will ensure that this special House lives long into the future.

Adam Gilchrist AM
Patron

EXECUTIVE OFFICER'S MESSAGE

As we anticipate and prepare for our future relocation, so much progress was made during 2013.

We were simply amazed and incredibly proud to have completed our Stronger Together Capital Campaign to raise \$20 million towards the construction of the new Ronald McDonald House and in just nine months! Not only did we hit our goal of \$20 million but in fact we exceeded it to raise a total of \$22 million.

There were many factors that contributed to the success of the campaign but none more so than the cause itself. It was evident that the Community understood the critical need for the Charity to relocate and continue to provide a vital service to regional families whose children would be treated at Perth Children's Hospital when it opens in 2015. There was also an acknowledgement that sadly we are operating at full capacity every night in



the current House and in fact having to turn more and more families away on an increasingly regular basis. The need for a larger house to meet the current and future demand was also a dominant factor.

We couldn't have achieved such a remarkable result without the help of so many generous individuals and organizations who so strongly believed in this project and who either fundraised on our behalf or provided the much needed financial support to ensure that we met our goal. We are eternally grateful to everyone who participated and we have honoured these individuals on page 10 and 11 of this annual report.

Special mention must be made of Lotterywest, BHP Billiton Iron Ore and Fortescue Metals Group who each lead the way in pledging \$8 million, \$5 million and \$2 million respectively. We are incredibly proud to be associated with each organization and look forward to working with each entity and all of our capital campaign donors over the length of this exciting project and beyond.

In our Annual Report for 2012, I listed the individual members of our Capital Campaign Committee and I would like to take this opportunity to do so once again:

Sharon Kais	Kais Contracting
Chris Bates	Checkside
Alan Bishop	EBM Insurance
Paul Dalgleish	RCR Tomlinson
Peter McBain	Brierty
Brad Shallard	Bell Potter Securities
Keith Sheppard	Foundation Planning Services
Bruce Williamson	Westminster National Pty Ltd
David Fardon	Linneys
Peter Meurs	Fortescue Metals Group Ltd
Dalton Gooding	Gooding Partners
Greg Parker	The Metal Group
Marlene White	Formerly worked for Hartleys

These wonderful people went above and beyond for Ronald McDonald House and we are grateful that they remain inextricably linked to the Charity - hopefully for many years to come.

Personally, I garnered much strength and confidence from some special people who mentored me through this last year and I would like to pass on my appreciation to our House Patron of 13 years and Patron of the Stronger Together Campaign - Adam Gilchrist AM, Co Campaign Patron and Campaign Planning Chairman, Ex-Governor of Western Australia - Dr Ken Michael AC, RMH Chairman - Glenn Baker, Chairman of the Capital Campaign - Peter Meurs and Chairman of the Campaign Taskforce - Dalton Gooding. To all of you, thank you. It was an honour to work with you all.

We are appreciative of all the assistance we have received from our new to be landlord the QEII Medical Centre Trust and I thank Trust Chairman, Steven Cole, Project Director, Paul Hansen and all Members of the Trust for their support to date.

We cannot forget that whilst the Campaign was all encompassing, we were still caring for 18 families of seriously ill children every night at the current RMH together with managing our associated programs. We achieved another outstanding financial year and achieved all markers set for our programs. A result such as this is only achieved through the focus, hard work and commitment by an amazing team of staff and volunteers and the continued support of so many donors both in-kind and financial.

To our McDonald's family and our largest and longest corporate donor, we extend our thanks on so many levels, whether it be to the McDonald's Licensees who sit on our Board and Chair our Ball Committee, the Adopt a Room sponsors, the Make a Mealers, the advocates for RMH, the riders who ride in the WA Ride for Sick Kids each year and the corporation who provide so much corporate support we thank everyone at the WA Head Office and each individual Licensee for your ongoing commitment to your Charity.

The volunteers of Ronald McDonald House never fail to overwhelm me in their generosity of spirit and their passion for the work that they do and the care they provide to families and their children. The number of people who are volunteering at the House, Family Room, Family Retreats and

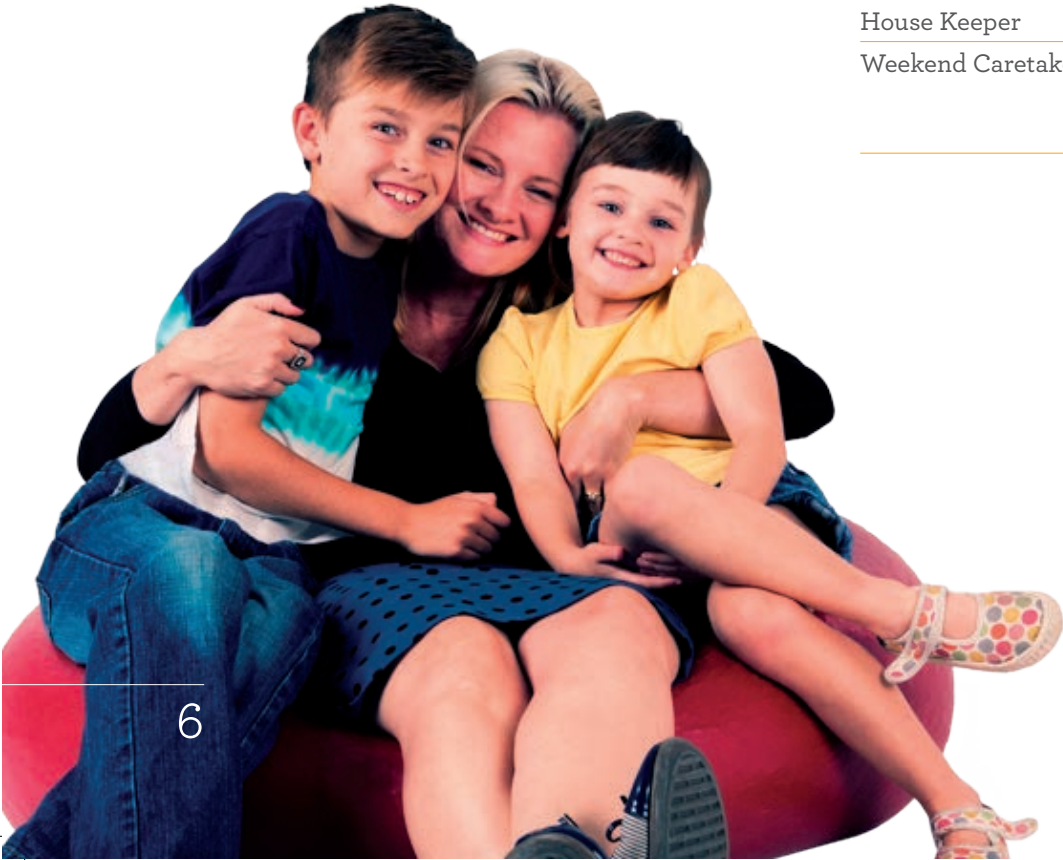
the Learning Program has grown exponentially, so much so that we have a waitlist! Our Volunteers are so valuable to us in so many ways and a simple thank you never seems like enough gratitude or recognition for the amount of work that they do and the savings that they represent for RMH.

The Members of the RMH Board are also all Volunteers and as you will read in this report, we have farewelled some members during our recent Board transition and we thank them for their passion and service to the Charity during their tenure. We thank all members for their personal dedication, their support, confidence and trust.

Alison Salmond
Executive Officer

RMH Team:

Operations Manager	Courtney Kennedy
Business Manager	Megan Jacob
Learning Program State Manager	Clare O'Connor
Learning Program State Manager	Louise Brennan (Resigned 2013)
Education Coordinator	Alicia Jeans
Business Development Manager	Brad Hilyard
Corporate Partnerships Executive	Bec Stott
Community Liaison Officer	Jeannie Bartlett (Resigned 2013)
Communications Officer	Haydn Kruger
Receptionist	Amanda Hunt
Administration Assistant	Dawn Cooke
Overnight Caretaker	Roma Russell
House Keeper	Susan Bryce
Weekend Caretakers	Andy & Lindsay Walsh John & Anne Halpin Mike & Nina Ford



CHAIRMAN'S MESSAGE

When the financial year for Ronald McDonald House Perth ended in December 2013, so did a significant chapter in my life.

As most of you are aware I have been involved with this wonderful charity for over 25 years and have had the pleasure of guiding the organisation as chair of the board of management for the past 12 years.

It had always been my intention to step aside at the next Annual General Meeting to allow for the smooth transition of a new chair ready for the challenges associated with the new 47 room house. With timeframes looming ever closer, I stepped aside and Janiene Pollock was elected as chair at the December meeting.

Janiene was welcomed onto the board in early 2013 and as a McDonalds owner operator, she has the charity very much at heart and is committed to continuing the work of former Chairs of the Board.



I will continue to support Janiene and her board through this transitional period. I am very excited about the new house and even though I have been around for what feels like an eternity, I was not present at the opening of our current house so something for me is missing and I am very much looking forward to being present at the grand opening.

Once again, our financial results as detailed in this Annual Report clearly indicate the very high professional level at which Alison and her team work but also acknowledges the continued heightened level of support by our stakeholders and unparalleled level of service we offer to our families.

I am very much looking forward to the future of the Charity and the many programmes we can deliver to help improve the lives for seriously ill children and their families in WA.

Glenn Baker
Chairman

RONALD McDONALD HOUSE

Opened in November 1990, Ronald McDonald House Perth provides a home-away-from-home for regional families of seriously ill children undergoing treatment for cancer and other life threatening illnesses at Princess Margaret Hospital. Since opening, Ronald McDonald house has provided a home-away-from-home to more than 3,500 families.

When families have to travel far from home to obtain specialist medical care for their sick child, securing accommodation in an unfamiliar place adds to their stress and anxiety. It can also add enormous financial pressure to families already stretched to the limit by medical bills and associated costs. Ronald McDonald House helps ease that pressure by providing accommodation to families at no cost near their child's hospital for as long as they need it - days, weeks, months or years. Though there is no place like home, Ronald McDonald House strives to provide a safe and comfortable environment where the whole family can stay together for the duration of their child's treatment.

Doctors agree that the House creates a significant health benefit, as studies have shown that children who have their families close by respond better to treatment. We believe that when a child is sick the love and support of family is as powerful as the strongest medicine prescribed.

VISION

To be Australia's leading charity continually striving to improve the health and well-being of seriously ill children and their families.

MISSION

Ronald McDonald House Charities creates, finds and supports programs across Australia that help seriously ill children and their families.

PURPOSE

We're here for seriously ill children and their families.

IN 2013 RONALD McDONALD HOUSE...

Length of Stay Period at Ronald McDonald House Perth

1 to 3 days - 67% 4 to 7 days - 17%
8 to 14 days - 7% 15 to 30 days - 4%
31 to 45 days - 1% More than 45 days - 3%
Average length of stay - 9 days

Family retreat stays in 2013

Bunbury - 27 families
Jurien Bay - 23 families
Total of 287 nights stayed at the Ronald McDonald Family Retreats

How many people visited a family room - almost 45,000

RMH PERTH RECONCILIATION ACTION PLAN (RAP)

Successful RAP organisations know that reconciliation is good for business, good for the economy and good for the nation. This year, we are building a RAP into our business. The RAP program is focused on long-term, sustainable activities that will have a mutual benefit for the community and the organisation. We aim to ensure we are well positioned to implement an effective and mutually beneficial RAP which will identify relationships, respect and opportunities actions specific to our business and our sphere of influence.

The Reflect RAP will allow our organisation to focus on building relationships both internally and externally, and raise awareness with our stakeholders to ensure there is shared understanding and ownership of our RAP within our organisation.

RMH Perth's vision for reconciliation is centred on realising the rights of Aboriginal and Torres Strait Islander children, their families and communities.

We believe that for reconciliation to take place the history of injustices against Aboriginal and Torres Strait Islander people must be acknowledged and the diversity of their cultures and heritage recognised and respected. Our vision is of a

reconciled Australia where Aboriginal and Torres Strait Islander children can reach their full potential and where their right to survival, development and protection is attained. This means working closely with communities, building relationships based on equity and respect, and supporting Aboriginal and Torres Strait Islander people to play a meaningful role in the development of policies and programs that affect them. Reconciliation is a long term process, and RMH Perth is firmly committed to bringing our vision of reconciliation to life at every level of our organisation and through every aspect of our programs, policy work and relevant operations.



THE STRONGER TOGETHER CAPITAL CAMPAIGN

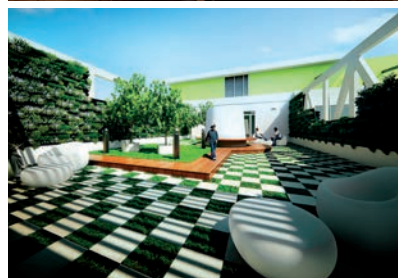
In 2013, the Stronger Together Capital Campaign not only raised the target of \$20 million to construct a new Ronald McDonald House for Western Australia, but exceeded the goal and raised \$22 million.

This would not have been possible without the generosity of the Western Australian community who rallied behind this campaign and who believed in our mission. We'd like to make special acknowledgement of our mission partner, McDonald's Australia and the McDonald's Licensees for their ongoing support of the House and the Stronger Together Capital Campaign.

The success of the Campaign is attributed to the leadership shown by:

- Adam Gilchrist AM - Patron of 13 years and Patron of the Stronger Together Campaign
- Dr Ken Michael AC - Co Campaign Patron and Campaign Planning Chairman, Ex-Governor of Western Australia
- Glenn Baker - Ronald McDonald House Perth Chairman
- Peter Meurs - Chairman of the Capital Campaign
- Dalton Gooding - Chairman of the Campaign Taskforce

We are very appreciative of the assistance we have received from the QEII Medical Centre Trust and we thank you for commitment to this campaign.





THANK YOU TO OUR CAMPAIGN DONORS

Adam and Mel Gilchrist
 Alan Bishop
 AMP Capital
 An anonymous gift in honour of
 Mr. Brian J Gorey
 ANZ
 Apache Energy
 Australian Children's Trust
 Bell Potter Securities Ltd
 Bendigo & Adelaide Banks
 BHP Billiton
 Brierty Limited
 Bruce & Wendy Williamson
 Cassandra Treadwell
 Channel 9 Perth Appealathon
 Chris Bates and Checkside Pty Ltd
 Clinton Aitchison
 Collie & Districts Community Bank
 Dalton & Mardi Gooding and Family
 Dean Wauters
 Downer Mining
 Dr. Ken Michael AC and Family
 EBM Insurance

Edith Cowan University
 Euroz Charitable Foundation
 FMG Dusty Devils - Cloudbreak OPF
 Fortescue Metals Group Ltd
 Fortescue Metals Group Ltd
 Employees
 Frank and Sharon Maher
 Genstar Hire & Sales Pty Ltd
 Gerard Daniels
 Goldfields Children Charity Inc
 Gooding Partners
 Graham Foster
 Hartleys Limited
 Herbert Smith Freehills
 Honan Partners
 Ian Cochrane
 Iron Riders
 Jim and Julia Moore
 John Jones and Access Group
 Australia
 Justin Mannolini
 Kais Contractors - Dave and Sharon Kais
 Katana Asset Management Ltd

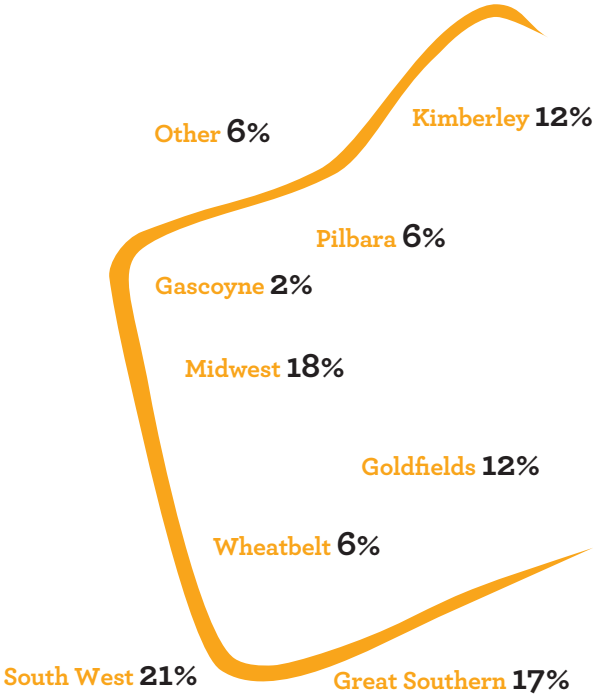
Keith Sheppard and Family
 Keiwit
 Ledge Finance Limited
 Low Beale
 Lotterywest
 LushTV
 Mandy York
 Mark Grime
 McCusker Charitable Foundation
 McDonald's
 McDonald's WA Licensees
 Movies by Burswood
 Mrs. Helen Leech
 Neil & Lee Pinner
 NRW Holdings Ltd
 Pacer Legal
 Peter & Maxine Meurs and Family
 Primewest Management Property
 Development
 Rapid Crushing & Screening
 RCR Tomlinson
 Renee McInerney
 RFSK Participants 2013

Rhodes Family
 Ross & Kate North & Ross North Homes
 Ross and Nic Williams
 Roy Weston Nominees - Warwick
 Social Club
 South West Campus
 St John of God Health Care
 Stuart Marquardt
 The Barrows Foundation
 The Bass Family Foundation
 The Bendat Family Foundation
 The Great Southern Weekender
 The Jack Family Charitable Trust
 The Late Alex Ashworth Preece &
 Family
 The McBain Family
 The SBA Foundation
 The Stan Perron Charitable Foundation
 The State Government's Royalties for
 Regions program
 Westminster National Equipment &
 Property Finance Pty Ltd
 Yvonne Attwell & Gerry Kelly

Breakdown of illnesses presented by Children in 2013

Oncology/Hematology	29%
Neurological	14%
Orthopedic	13%
Cardiac	7%
ENT	4%
Respiratory	4%
Trauma/Accident	3%
Ophthalmology	3%
Gastrointestinal	2%
Endocrine	2%
Renal	2%
Neonate	2%
Cystic Fibrosis	1%
Burns	1%
Mental Illness	1%
Auto - Immune	1%
Unknown	1%
Other	10%

Regional Breakdown of families who stayed at RMH in 2013



FAMILY MESSAGE

WORDS CANNOT EXPRESS THE GRATITUDE WE FEEL TOWARDS RONALD MCDONALD HOUSE, ITS STAFF & MANY WONDERFUL VOLUNTEERS.

2013 WAS ONE OF THE MOST HEART BREAKING, & HEART WARMING, YEARS FOR OUR FAMILY. THE HOUSE PROVIDED US WITH NOT ONLY A TEMPORARY HOME, WHICH MEANT THE WORLD, BUT ALSO A WONDERFUL "FAMILY" WHO GAVE US SO MUCH LOVE & SUPPORT. WE MET FANTASTIC PEOPLE WHO GAVE US STRENGTH, WARMTH & STABILITY, FOR WHICH WE WILL BE FOREVER GRATEFUL.

WE ARE INCREDIBLY LUCKY TO BE HOME AGAIN, BUT OUR THOUGHTS ARE ALWAYS WITH YOU ALL. THANKYOU FOR EVERYTHING.

SUZETTE'S STORY THE RMH JOURNEY

‘Two weeks into the first school term of 2013, Samuel came home in a lot of pain. My first reaction was “not gastro!” Samuel was quickly taken to hospital when his father Keith came home from work. The Jilba family were living in Karratha, the closest hospital being some hours’ drive from the town.

4am the next morning, Samuel was flown to South Hedland Hospital. After receiving scans, he was flown to Perth and that’s when Samuel’s mother, Suzette received the call that every parent dreads. ‘I asked what they thought it might be and Keith told me they found a large mass in his lower abdomen. “What do you mean by mass?” was my first question. “Like a tumor? Like cancer?” Keith said yes, Samuel has Desmoplastic Small Round Cell Tumors and told me he’d ring once he spoke with the Aboriginal Liaison Officer in hospital to discuss accommodation.’

‘With tears flowing down my cheeks, my big girl and I chatted about how her brother could be very sick. I hadn’t cried so hard in years. It was then I noticed how big

my girl was. She grabbed my hand and said “Mum, it will be alright, it’ll be ok” I then made the call to my family in Newman telling them that Samuel has a tumor and it’s serious. What more can you say? It was enough to make everyone cry.’ Soon after Samuel was diagnosed with cancer, the Jilba’s were given accommodation at Ronald McDonald House Perth. ‘For us, the most important part of staying at Ronald McDonald House Perth is having the support network of other families in similar situations. The families that are staying at Ronald McDonald House are all going through similar journeys and we are all there to support one another any way we can.



RONALD McDONALD FAMILY RETREAT



The Ronald McDonald Family Retreat program gives families of sick children a place to relax, connect and spend precious time together. The memories families will share will last a lifetime. For families who have recently suffered the death of a child, the Family Retreats provide a necessary opportunity and peaceful place where they can begin to come to terms with their loss together, without having to face the world back home. Here in WA we're extremely lucky to have two Family Retreats located in Bunbury and Jurien Bay.

Our Family Retreat Bunbury received an extensive garden makeover thanks to a financial contribution from our new supporting partner Alinta Energy. Through the help of the Alinta Energy team and the Bunbury community, the garden was transformed from a rundown, overgrown garden to a tranquil, healthy and vibrant garden. A team of 30 undertook the garden challenge planting over 300 plants, putting new paving in and building a cubby house and as you can see the results were astounding.

THE WORRALL FAMILY

My family and I were lucky enough to visit the Ronald McDonald Family Retreat Jurien Bay in October 2013. Max & Margaret - the Apex Campsite Managers were extremely kind and made our stay very enjoyable. The house itself was great with all the modern facilities required to enjoy a relaxing stay. The campsite also had a playground for the kids, a cubby house and a basketball court. Fishing is a huge interest for my family and the Family Retreat is within walking distance to the main jetty in Jurien. Whilst most of our time was spent fishing, we also visited the Lobster Shack and The Pinnacles. The owners of the neighbouring Caravan park were also kind enough to let us use their main attraction, the jumping pillow. I definitely have to mention that the Jurien Bay Fish & chip shop is the best going around!

My family have a number of medical conditions/ special needs and disabilities. Our break away from all of the dramas, appointments and stresses at the Ronald McDonald Family Retreat Jurien Bay was just what we needed to relax and forget for just a while. We really did have a fantastic time and hope that we may be lucky enough to visit the Family Retreat again someday. Thank you so much Ronald McDonald House!



RONALD MCDONALD FAMILY ROOM

Here in Western Australia we are lucky to have two Ronald McDonald Family Rooms, one on the Oncology Ward at Princess Margaret Hospital and one on the Pediatric Ward at the Peel Health Campus. Both Family Rooms provide a safe haven and an escape for parents whilst they are supporting their child. So what does a Family Room really mean? (From a Family Room volunteers perspective)

From a volunteer point of view, the Family Room can be a place for quiet, a place for friendship, a place for tears and a place for laughs. It provides yummy food (fresh baked when the volunteers cook!) and a bed for weary bodies.

The Family Room can be an escape for families, even just for a moment. Being able to cook meals

for their children with specific dietary needs helps. It also provides a place to sit and chat, (especially for those families whose children who are in isolation) and it provides a bed for parents and carers where they can get a better night's sleep.

On a personal note, the Family Room has allowed me to show my family's gratitude for the support shown to us during difficult times at RMH Westmead in 2009. By volunteering, we can help make a difference to those families currently in hospital.

Michelle Wilmot,
Ronald McDonald Family Room Volunteer



RONALD McDONALD LEARNING PROGRAM

The Ronald McDonald Learning Program is a core program unique to Ronald McDonald House Charities Australia.

When a child has been off sick for a significant length of time, the prospect of going back to school can be daunting. The Ronald McDonald Learning Program helps primary and secondary children recovering from serious illness with their education through a variety of methods. The program reaches across the entire state of Western Australia and offers flexible and supportive solutions to helping children “catch up” on school they have missed. A wide range of highly skilled people bring this program to life including teachers, psychologists, speech and occupational therapists.

Each child that receives assistance through the Learning Program is eligible for:

- An educational assessment completed by a psychologist
- 40 hours of one-on-one tutoring with a qualified teacher
- A comprehensive individualised learning plan
- A termly report
- Financial assistance with speech and occupational therapy



FUN & FRIENDS & LEARNING
GAMES & SPORTS = SCHOO



ABBY'S STORY

Hi! My name is Abby Layh, I live in Castletown in Esperance and I am 12 years old. We moved to Esperance recently as we lived in Leonora previously.

I was diagnosed with Leukaemia in 2013 and have been having treatment where I have to be isolated for long periods of time. My mum and I lived at Ronald McDonald House for 6 months and I made some great friends while I was staying there.

My favourite things to do are playing and having fun. I like to play the keyboard and I love One Direction. I also have 2 brothers, 1 sister and 2 dogs.

The best food I've ever eaten is bacon and chicken stir fry! My friends and family would describe me as happy, funny and friendly.

I like school because I learn and make friends. I started at a new school, Castletown Primary School, in November and have made a lot of lovely friends already. I missed 6 months of school with my illness and attended school at PMH. I also went to 'Learning Legends' each week with my friends at Ronald McDonald House and we had fun with science experiments, maths games and even some cooking.

I am now on the Ronald McDonald Learning Program and will be starting my tuition in Term 1 with a lovely teacher named Carla. We will be working on Maths and Reading to help me to catch up on my missed schooling.

When I grow up most of all I want to be healthy. I love my family and they are the most important in my life.

Thank you to Horizon Power for sponsoring me, I really appreciate it!



2013 WAS A FANTASTIC
YEAR FOR THE LEARNING
PROGRAM IN WESTERN
AUSTRALIA:

5920

Hours of tutoring provided to
participants this year

148

Number of students tutored in 2013

78

Numbers of Tutors in the program in 2013

6

Number of indigenous students

87%

% of students from the Greater Perth Region

RONALD MCDONALD VOLUNTEER PROGRAM

We are very fortunate to have volunteers that we can count on and whose selfless spirit helps the families of our House every day. One of the most vital ingredients that contribute to the success of Ronald McDonald House are our volunteers. Volunteers are the backbone of our Charity because of the commitment, energy and enthusiasm they bring to the House.

Our volunteers assist our Housekeeper in maintaining the cleanliness of the House, preparing rooms for new families and assisting in manning both Ronald McDonald Family Rooms at Princess Margaret Hospital and Peel Health Campus. We are very fortunate to have so many wonderful

volunteers that we can count on and whose selfless spirit helps the families of our House every day. Without their unwavering support, we would not be able to provide the 'home away from home' for regional families of seriously ill children that we do.



IN 2013 THERE WERE:

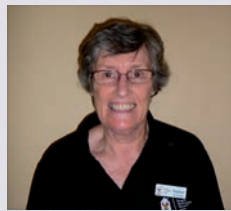
- 150+ PERMANENT VOLUNTEERS**
Volunteered their time for Ronald McDonald House
- 5,800 VOLUNTEER HOURS**
Were provided at the House & Family Room
- 22 CORPORATE VOLUNTEERING DAYS**
Were conducted at the House in 2013
- 250 PARTICIPANTS & 850 HOURS**
Were donated by Corporate Volunteers
- \$190,000**
The saving to the charity

VOLUNTEERS OF THE MONTH 2013

Every month at Ronald McDonald House we like to recognise and award a volunteer who has gone above and beyond by awarding them the prestigious title of Volunteer of the Month. These are the amazing volunteers for 2013 who received this award and what it means to them to be a volunteer at Ronald McDonald House.



January
Luke Epstein and Jack Sedgwick



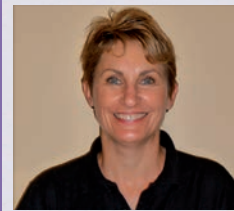
February
Daphne Farich



March
Sandra Burgess



April
Garry Lymn



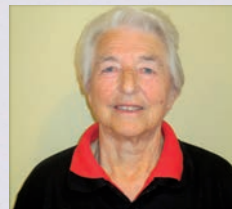
May
Megan Robinson



July
Lorette Ditchfield



August
Julia Smith



September
Margareta Resch



October
Susan Davis



November
Heather Bryce

June - Jacqueline Allen*

December - Conny Madaferri*

(*no photo available)

RONALD MCDONALD MAKE A MEAL PROGRAM

As the saying goes, “the kitchen is the heart of every home”. The meals provided by participants in the Make a Meal Program bought so much love into Ronald McDonald House Perth every evening, allowing our families to unwind, de-stress, and fortify their bodies to be at their best for their child in the hospital.

Since its inception in 2005, the Make a Meal Program has steadily grown year on year where in 2013, 331 various corporate groups, businesses, service organisations and groups of families and friends volunteered their time outside of work hours to prepare an evening meal for our families on site at the House. It is an act of kindness that translates feelings of concern into a tangible expression of human compassion.

All participants are encouraged to share the meals with the families where they sit down and learn our families stories, or for our families to find out what’s happening in current news affairs.

They come away with one of the most profound experiences in life. More often than not, participants take away this life changing experience with them and drives them to want to experience further philanthropic work either for Ronald McDonald

House Perth or for their other chosen charities.

The Make a Meal Program groups again in 2013 celebrated special days throughout the year such as Easter, Mother’s Day, Father’s Day, Halloween and Christmas. Celebrating their 7th year cooking meals for our families on Christmas Day, the Johnson Family didn’t disappoint, cooking a range of hot and cold roasts accompanied by seasonal roast vegetables with all the trimmings.

Thank you to all those who participated in the Make a Meal Program in 2013. The families are extremely grateful after a long day at the hospital to have a hot, delicious home-cooked meal prepared by for them.



FUNDRAISING HIGHLIGHTS

In 2013, Ronald McDonald House raised \$869,962 in fundraising revenue for the House from our mixture of amazing corporate partnerships, community groups, major and individual donors, events, McDonalds licensees, trust and foundations. Here we showcase just some of the activities that have taken place in 2013. Our thanks go to everyone who has raised money for Ronald McDonald House Perth - without your support we would not be able to provide the high level of care for regional families of seriously ill children that we currently provide.

RMHC MERCEDES-BENZ BALL

Former M People songstress Heather Small together with pop divas Mahalia Barnes and Prinnie Stevens wowed the crowd with show-stopping performances at the Ronald McDonald House Charities (RMHC) Mercedes-Benz Ball on the weekend, with guest's incredible generosity adding to the electric atmosphere.

Held at Crown Perth's Grand Ballroom on Saturday 2 November, more than 1000 guests attended and over \$730,000 was raised for RMHC, ensuring the event's #PROUD theme rang true.

RMHC Mercedes-Benz Ball Committee Chairman Rod Sinclair said the #PROUD theme of this year's ball was an ode to all those involved in RMHC and supporters and sponsors of the Ball.

"We are proud of our families, staff, volunteers and supporters and humbled by the generous donations at the Ball," Mr Sinclair said.



RMHC RIDE FOR SICK KIDS WA

Who would have thought that 24 lycra-clad people riding 450km over 4 days could raise so much money? It was a tough ride from Busselton to Subiaco (via Collie, Bunbury and Mandurah - yes we took the long way) but over \$420,000 was raised for Ronald McDonald House. While the riders were hurting physically on the ride, it was all for a great cause - knowing that they were helping our families made certainly made them pedal harder and faster. One of our former little residents, 9 year old Ethan also took part in the challenge and as a cancer survivor, he wanted to give back to the House that had helped him so much. Ethan alone managed to raise over \$11,000! Huge thanks and congratulations must go to the incredible riders, committee, sponsors and donors on their achievement.

ALINTA ENERGY

In 2013, Alinta Energy began an exciting new partnership with Ronald McDonald House. In addition to sponsoring the gas in the House, they also took up the adoption of the Teen Den. However the biggest project of all was undertaking an extensive garden makeover at the Ronald McDonald Family Retreat Bunbury.

Alinta Energy sponsored the makeover which was unveiled on Wednesday 27 November 2013 with the help of television personality and 'Garden Guru' Trevor Cochrane, Ronald McDonald House employees, Ronald McDonald House families and local media. The once desolate garden was transferred into a relaxing and serene space. The transformation included the installation of a new children's cubby house and fort, new paving and outdoor furniture, a new lawn and over 300 plants.



BECAUSE OF YOU

Thank you to all our 2013 supporters who helped us help more seriously ill regional children and their families!

With your help we are making the journey a little easier for seriously ill regional children and their families. Below is a list of our Major Donors:

SPONSORS

Adopt a Room

Alinta
Apache Energy
BHP Billiton Worsley Alumina Ltd
CBH Group
Cliffs Natural Resources Pty Ltd
Dongara Denison Local Rag/
Dongara Lions Club/Dongara
Charities Assoc
Esperance Bay Rotary Club
Kais Contractors
McDonald's Regional Licensees
Princess Margaret Hospital
Volunteers
Sands Fridge Lines
Sinclair Family
Stan Perron Charitable
Foundation
Steggles
Subsea 7
The Felstead Family
The Jessop Family
The McIntosh Family
The Neeson Family
The Sivaraj Family

Ronald McDonald Learning Program

Horizon Power
The Bass Foundation

RMHC - Mercedes Benz Ball Sponsors

ASF
Crown Perth
DG Global
Emirates
FMG
GeersSullivan
Janisson & Fils
Jiffy Foods
Kais Contractors
Mercedes-Benz
Miles from Nowhere
Park Brown International
Rosendorff
Silks
The Bass Family

RMHC Ride for Sick Kids WA Sponsors

Abcom Pty Ltd
Adshell
Advanced Visual
CBA
Clayton McIntosh
Coates Signco
Coca Cola
Cyclemania
EGA Corporate Services
Fresh Start
Go Play
Lanskey Construction
Martin Brower
Mil-Tek
Nine/WIN
Nova 937
PPR
Precision
Recsteel
Sands
Scott Gunson
Student Edge
Sullivan Technical Services
Taylor Parts & Services
Tecsec
Thinking Hats
Tim Parker
Viva
WF Landscaping

National Partners

Alinta Energy
Bosch
Cerebos
DFK
Domayne
Foxtel
Hewlett Packard
Initial Hygiene/Rentokil/
Ambius Plants
La-Z-Boy
Mars Food Services
Mortgage Choice
Popcake
Sealy
Steggles/Baiada
Watpac

General Sponsors

Lawley's
ANZ

MAJOR DONORS

Clinton Aitchison
Robert Anderson
Nola Banasik
Peter Beech
Murray Black
K & L Bremner
Pat Carr
Luke Craker
Tony Crook
Paul Davidson
Phoebe Donaldson
Michael Doyle
Wendy Duncan
Ron Ellis
Ron Farris
Barry Felstead
John Flood
Cameron Fredrickson
Scott Gunson
David Holt
Rob Humphryson
Guy Innes
B Kelly
Ross Kestel
Heather Lowndes
Paul McCreed
Pauline McGowan
Rosemary McIntosh
David McQuire
Patricia Miller
Kathryn Moore
Raelene Newnham
Geoff O'Regan
Lisa Piggott
Neil Pinner
Steve Radford
Jonothan Reid
Moreno Rosa
Guilian Sacilotto
Brendon Shadlow
Nicki Sharpe
Norm Sinclair
Rodney & Jane Sinclair
Sarah Stacey
Sonia Stanley
Richard Talmage
James Taylor
The Grieve Family
Julian Woodcock

Jessica Woodward
Amanda York

Corporate Donors

303 Lowe
Ajilon
ANZ Bank
Australian Model Railway
Association
Balayage
BBB's
Bechtel
Belmont Sport & Recreation
Dart Club
Benz Industries Pty Ltd
BHP Billiton
Borrello Legal
Bunbury Colts Cricket Club
Busseton Old Time Dance
Committee
Cannington Retravision Super
Store
CCB Plant Hire
Chatfield Consulting
Chevron-Upstream Facilities
Team
Children's Cancer Care Group
of Albany
Christmas Island Charities
Colliers International
Co-operative Bulk Handling
Limited
Country Women's Association
Joondalup & Districts
Crown Perth
Cunderdin Lions Club
Dongara Denison Local Rag
Downer EDI Mining
Free Range Supplies
Gindalbie Station
Goldfields Children Charity Inc
Goldfields Chiropractic and
Healing Centre
Goldfields Crane Hire Pty Ltd
Goldfields Personnel Pty Ltd
Goodstart Early Learning Mount
Nasura
Grant Thornton Australia
Hammersley Netball Club
Hartfield Country Club
Hawker Pacific
Herbert Smith Freehills

Hills Holdings Pty Ltd
Horizon Power
Jacaranda Gardens Retirement
Village
KC Maintenance Solution
KPMG
Lawley's
Lioness Club of Broome
Lions Club of Cowaramup
Lions Club of Greenough Inc
Lions Club of Jandakot Lakes
Lions Club of Mount Barker
LTM Risk Partners
LWP Property Group Pty Ltd
Mayday Op-Shops
McDonalds Australia Ltd
Mineral Resources
Movies by Burswood -
The Movie Charity
Mt Barker Hospice Group
Mt Lawley Primary School
Newmont Asia Pacific
NRW Pty Ltd
Nuline Dance
O'Regan Group Insurance
Brokers
Pingelly District Hospital Ladies
Auxiliary Op Shop
Play and Learn
Port Hedland Golf Day
Puckett Electrical Pty Ltd
Quality of Life Foundation
Republic of Singapore Air Force
Rimex Wheel Pty Ltd
Roly Industries Pty Ltd
Rotary Club of Hillarys
Rotary Club of Karrinyup
Rotary Club of Willetton
S & L Bobcats
Savannah Engineers (WA)
Pty Ltd
Silver Lake Resources
South West Warriors Rugby
League Club
Star City Memorabilia
State West Group
Swan Group
T.G.I.F Linedancers
Taxi Trucks Australia
The Barrows Foundation
Thistle Fabrication

Thommo's Carpentry Pty Ltd
Unity Insurance Brokers
WAPRES
Wood Group Kenny
Wood Group PSN
Worldbase Securities
Yerecoin Primary School
Yornup Hall Committee

REGULAR GIVERS

Alison James
Amanda J DeBonde
Anna Moolman
Anthony Doig
Dawn Cooke
Deborah Jane Raffaele
Donna Plunkett
Glen Lewis
Halimah Drummond
Holger Kaufmann
Ian Cullen
Jennifer Grove
Jeremy Kane
Joris Steaman
Kelly Collins
Kelly Van Nelson
Kelsey Rhodes
Kerry Cooper
Kieran Charles
Krishna Satiah
Lynette Brocas
Miss M A Brooke
Mr Scott S Herbert
Natalie Campion
Pat Hill
Penelope M Taylor
Quintin Brennan
Rachel Merry
Ray Gross
Rebecca L Stott
Robyn Richardson
Robyn Sarstedt McCarthy
Samanti Butler
Scott Herbert
Sharai A Johnson
Simone Egan
Sophie R Tomalin
Tony Forway
Valerie A Sheppard
Vicky Honey
Yvonne Scrivener

FINANCIAL INFORMATION MESSAGE FROM THE TREASURER

The Home Away from Home Inc (T/as Ronald McDonald House Perth) has experienced another successful financial year recording a comprehensive surplus of \$3,874,205. This amount is a great achievement given the uncertainty of the global economic markets.

The comprehensive profit resulted in an operational surplus of \$568,287 and a Capital Campaign fund surplus of \$3,305,918.

The financial statements are general purpose financial statements and comply with all of the relevant accounting standards including the requirement of revaluing the assets to record the assets at market value.

The fiduciary duty for the finances of The Home Away from Home Inc has been managed by the Finance committee consisting of members Andrew Frontino, Steve Hindley, Alison Salmond (Executive Officer) and Megan Jacob (Business Manager). During the past year the committee has continued to develop policies and systems to ensure a solid framework is maintained. We appreciate the professionalism, advice and commitment of the Committee during the financial year.

The strong financial position of The Home Away from Home Inc provides the foundation for the

future activities of Ronald McDonald House Perth. These activities include the continual running of the current operations in conjunction with the construction of the new House, whilst containing budget and timeline. With reference to the financial report the Ronald McDonald House Perth is in a strong financial position to achieve both of these objectives.

Like all strong charities the financial result would not have been achieved without the generous support of the community through financial and in kind donations. We are always overwhelmed by the generous support of the community and look forward to the continuance of this financial support in the coming year.

Ronald McDonald House Perth has operated within a sphere of change during 2013 and will experience more in 2014. The continued commitment from the Board, Staff and volunteers will stand the Charity in good stead to achieve its' mission and ensure another strong financial result in 2014.

Once again, well done on another great year to everyone involved – a great achievement.

Tim Parker
Treasurer

FINANCIAL STATEMENTS

STATEMENT OF FINANCIAL POSITION

CURRENT ASSETS

Cash and cash equivalents - Unrestricted
 Cash and cash equivalents - Restricted
 Trade and other receivables
 Inventory
 Other Financial Assets
 Non-current assets held for sale

TOTAL CURRENT ASSETS

NON-CURRENT ASSETS

Property, plant and equipment

TOTAL NON-CURRENT ASSETS

TOTAL ASSETS

CURRENT LIABILITIES

Trade and other payables
 Provisions

TOTAL CURRENT LIABILITIES

NON-CURRENT LIABILITIES

Provisions

TOTAL NON-CURRENT LIABILITIES

TOTAL LIABILITIES

NET ASSETS

EQUITY

Retained Earnings
 Revaluation Reserve
 Capital Campaign Reserves

TOTAL EQUITY

NOTES	2013 \$	2012 \$
7	4,071,093	3,279,537
7	5,473,018	1,720,670
6	196,096	257,674
	1,472	-
5	1,627,182	1,198,237
	-	719,868
	11,368,861	7,175,986
4	2,328,381	2,572,952
	2,328,381	2,572,952
	13,697,242	9,748,938
9	86,090	24,222
8	46,518	45,074
	132,608	69,296
8	45,911	35,124
	45,911	35,124
	178,519	104,420
	13,518,723	9,644,518
10	6,582,654	6,014,367
	1,146,165	1,146,165
	5,789,904	2,483,986
	13,518,723	9,644,518

As at 31 December 2013.

This statement of financial position should be read in conjunction with the notes of the financial statements.

STATEMENT OF COMPREHENSIVE INCOME

	NOTES	2013 \$	2012 \$
Revenue	3	1,995,141	1,851,739
Other income	3	-	(2,624)
Changes in market values of listed investments	3	211,597	76,539
		2,206,738	1,925,654
Employee benefits expense		(873,346)	(723,245)
Depreciation, amortisation and impairment		(286,555)	(278,860)
Fundraising expenses		(19,609)	(37,032)
Loss on sale of listed investments		(11,931)	(60,933)
Other expenses		(447,010)	(360,137)
		(1,638,451)	(1,460,207)
OPERATING SURPLUS FOR THE YEAR		568,287	465,447
Donations	3	4,370,043	1,834,777
Fundraising	3	175,639	-
Grants	3	55,000	-
Investment income	3	7,500	-
Interest income	3	96,864	50,692
Building design fees		(348,975)	(205,170)
Campaign management fees		(354,750)	(351,750)
Fundraising		(50,069)	-
Sub-consultant fees		(552,498)	-
Project management fees		(80,000)	-
Other expenses		(12,836)	(77,783)
CAPITAL CAMPAIGN SURPLUS FOR THE YEAR		3,305,918	1,250,766
TOTAL SURPLUS FOR THE YEAR BEFORE INCOME TAX		3,874,205	1,716,213
Income tax benefit		-	-
SURPLUS AFTER INCOME TAX EXPENSE FOR THE YEAR ATTRIBUTABLE TO THE MEMBERS OF THE HOME AWAY FROM HOME INC.		3,874,205	1,716,213
Other comprehensive income, net of income tax		-	-
TOTAL COMPREHENSIVE INCOME FOR THE YEAR ATTRIBUTABLE TO THE MEMBERS OF THE HOME AWAY FROM HOME INC.		3,874,205	1,716,213

For the year ended 31 December 2013.

This statement of profit or loss and other comprehensive income should be read in conjunction with the notes of the financial statements.

STATEMENT OF CHANGES IN EQUITY

	CAPITAL CAMPAIGN RESERVE	REVALUATION RESERVE	RETAINED EARNINGS	TOTAL EQUITY
	\$	\$	\$	\$
BALANCE AT 1 JANUARY 2012	1,233,220	1,146,165	5,548,920	7,928,305
Surplus after income tax expense for the year	1,250,766	-	465,447	1,716,213
Other comprehensive income for the year, net of tax	-	-	-	-
Total comprehensive income for the year	1,250,766	-	465,447	1,716,213
BALANCE AT 31 DECEMBER 2012	2,483,986	1,146,165	6,014,367	9,644,518
Surplus after income tax expense for the year	3,305,918	-	568,287	3,874,205
Other comprehensive income for the year, net of tax	-	-	-	-
Total comprehensive income for the year	3,305,918	-	568,287	3,874,205
BALANCE AT 31 DECEMBER 2013	5,789,904	1,146,165	6,582,654	13,518,723

For the year ended 31 December 2013.

This statement of changes in equity should be read in conjunction with the notes to the financial statements.

STATEMENT OF CASH FLOWS - UNRESTRICTED

	NOTES	2013 \$	2012 \$
CASH FLOWS FROM OPERATING SERVICES (Unrestricted)			
Receipts from:			
Donations and appeals		1,131,851	943,902
Operational grants		369,508	300,677
Accommodation		419,543	410,344
Other income		1,262	86,545
Capital campaign transfers		141,007	-
Payments to suppliers and employees		(1,311,355)	(1,178,281)
NET CASH PROVIDED BY OPERATING ACTIVITIES		751,816	563,187
CASH FLOWS FROM INVESTING ACTIVITIES (Unrestricted)			
Investment income		21,870	90,041
Interest income		122,654	134,312
Proceeds on disposal of portfolio investments		8,508	-
Purchase of portfolio investments		(51,140)	-
Purchase for property, plant and equipment		(62,152)	(81,147)
NET CASH PROVIDED BY INVESTING ACTIVITIES		39,740	143,206
Net increase in cash and cash equivalents		791,556	706,393
Cash and cash equivalents at the beginning of the financial year	4	3,279,537	2,573,144
Cash and cash equivalents at the end of the financial year (Unrestricted)	7(a)	4,071,093	3,279,537

For the year ended 31 December 2013.

This statement of cash flows should be read in conjunction with the notes to the financial statements.

STATEMENT OF CASH FLOWS - RESTRICTED

	NOTES	2013 \$	2012 \$
CASH FLOWS FROM OPERATING SERVICES			
Receipts from:			
Donations and appeals		4,600,682	1,098,687
Capital campaign transfers		(141,007)	-
Payments to suppliers and employees		(1,359,059)	(661,928)
NET CASH PROVIDED BY OPERATING ACTIVITIES		3,100,616	436,759
CASH FLOWS FROM INVESTING ACTIVITIES			
Investment income		7,500	-
Interest income		96,864	50,692
Proceeds on disposal of assets held for sale		719,868	-
Purchase of portfolio investments		(172,500)	-
NET CASH PROVIDED BY INVESTING ACTIVITIES		651,732	50,692
Net increase in cash and cash equivalents		3,752,348	487,451
Cash and cash equivalents at the beginning of the financial year	4	1,720,670	1,233,219
Cash and cash equivalents at the end of the financial year (Restricted)	7(a)	5,473,018	1,720,670
Total cash and cash equivalents at the end of the financial year		9,544,111	5,000,207

For the year ended 31 December 2013.

This statement of cash flows should be read in conjunction with the notes to the financial statements.



Ronald
McDonald
House®
PERTH

Ronald McDonald House Perth
20 York Street, Subiaco WA 6008
PO Box 8066, Subiaco East WA 6008
T: (08) 9346 9000 | F: (08) 9382 3056
E: ourhouse@rmhwa.com.au | W: www.rmhc.org.au
Facebook: www.facebook.com/RMHPerth